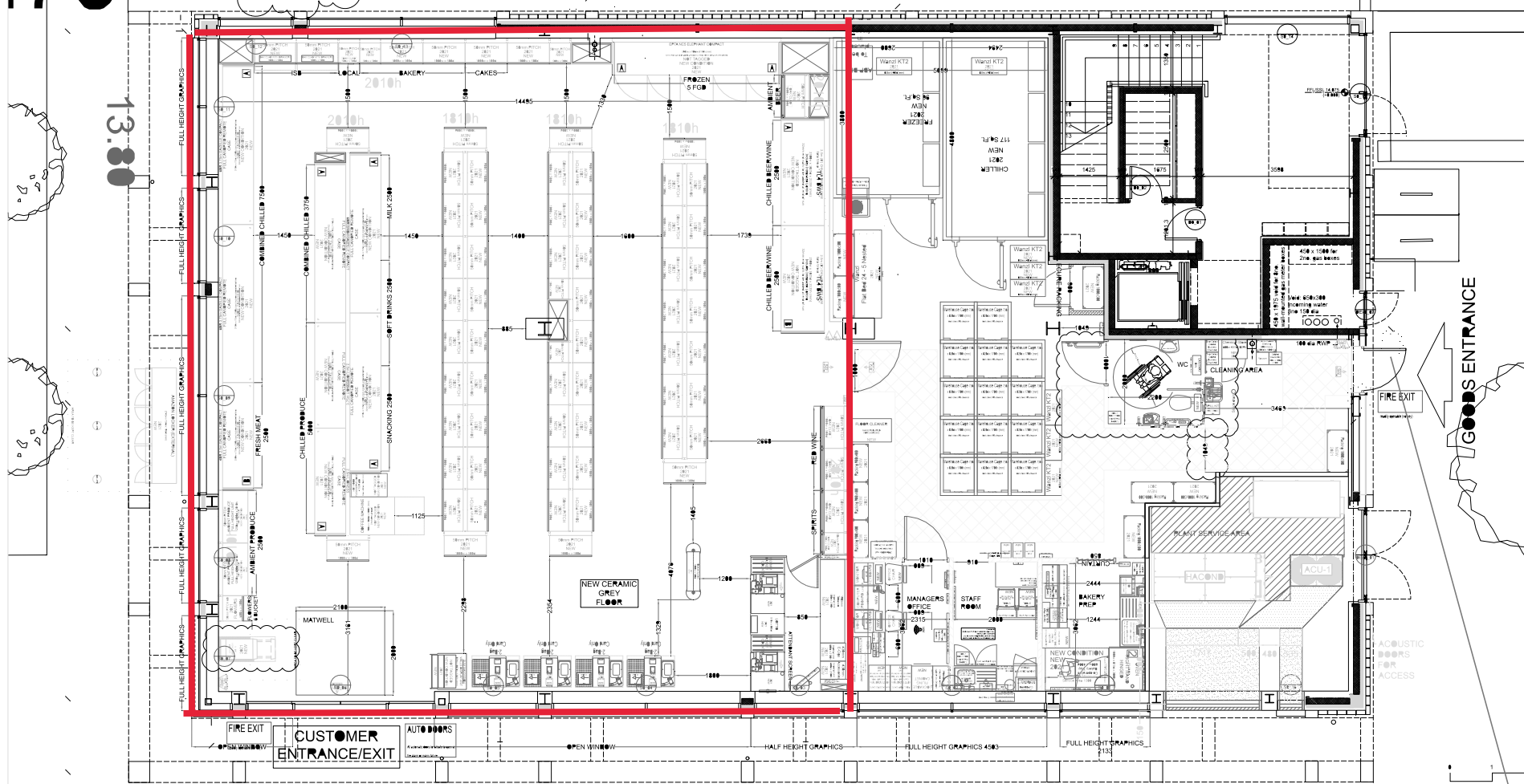


SITE MAP (NTS)



SHOP FLOOR & BACK OF HOUSE @ 1:50

**Description of Amends**  
**21.03.19 / P1F7M0W0W**  
 Feasibility draft  
**27.03.19 / P1F7M0W0W**  
 ATM moved to BOH and external  
 2 SCO added  
 Maxivision relocated  
**10.02.20 / P1F7M0W0C**  
 New Shell Overlay  
**13.02.20 / P1F7M0W0C**  
 Added Coffee  
 Added External Amazon Locker  
**30.03.20 / P1F7M0W0A**  
 Shell overlay - plant room extended.  
 Re-planned bakery prep room.  
 Reduced back-up freezer sq ft.  
 Re-positioned WC.  
 Proposed external canopy for cage storage.  
**07.04.20 / P1F7M0W0A**  
 DG amends.  
 Removed ATM from managers office.  
 Replaced with internal unit on the sales floor.  
 Reduced managers office to standard size to allow for additional warehouse cage space.  
 Relocated freezer cages.  
 Relocated combined chilled to perimeter.  
 Added hot food and relocate coffee.  
 Removed 1 x AST.  
 Updated bay count.  
**05.03.21 / P1F7M0W0S**  
 Fire equipment added to BOH.

**EXCEPTIONS**  
 Any areas of the proposal that are not in-line with the current model should be detailed here along with the reason and tracking behind it. To also include any by-laws or covenants.

**Notes**  
 All dimensions to be checked on site before starting work.

**Additional Equipment**

VND	#
Magazines	#
Cards	#
Crispa Impulse	-
Pizza Space	#
BWS Prom	#
Grocery Prom	#
Rail Cages BOH	#
Promo Plinths	#
<b>Basket &amp; Trolley Matrix</b>	
Type	No Stacks
Fire Exit Sign	#
Extinguisher	#
Fire Call Point	#
Fire Escape Route	#
Top Shelves:	Yes
Per 100 sq ft max for specific products	

**LICENSED AREA**

General Areas	Existing	Proposed
Gross Building Area (GBA)	- Sq Ft	4478 Sq Ft
Gross Sales Area (GSA)	- Sq Ft	2487 Sq Ft
Net Sales Area (NSA)	- Sq Ft	2443 Sq Ft
<b>Back of House Areas</b>		
Back Of House	- Sq Ft	1216 Sq Ft
Back Up Chilled	- Sq Ft	117 Sq Ft
Back Up Frozen	- Sq Ft	96 Sq Ft

Programme: 2021 Acquisition  
 Format: EC Map  
 Risk Rating: TBC  
 Bay Count: 105  
 Proposal Number: Fixture Revision: Merchandising:  
 P1 F7 M0 W0 C M0  
 amanda.gault@coop.co.uk  
 Survey Status: TBC  
 Drawing Status: Draft

**CAMPLESHON ROAD**

Campleshon Road  
 York  
 Yorkshire  
 YO23 1DQ

Hub Number: #  
 Store Phone: TBC

OP A1  
 The Co-Op, A Major Share Member of M&S Ltd.